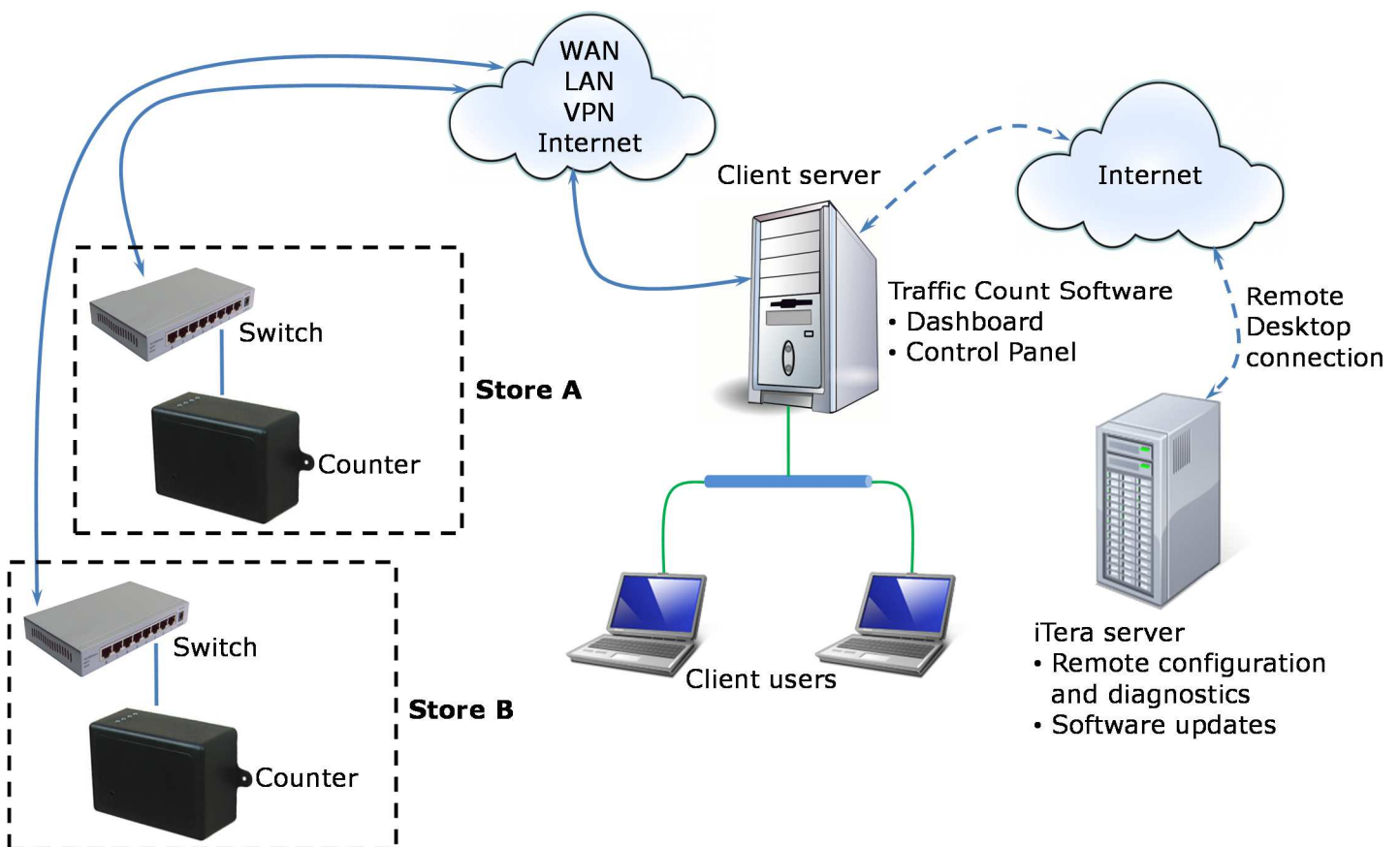


Traffic Count Software

The iCount500 series people counters are a fully networked people counting solution designed to automatically retrieve data from multiple stores/entrances/exits over an existing network (LAN, VPN or WAN) or the internet. It is a bi-directional counting system providing both Count In and Count Out.

The Traffic Count software, which is installed on a central server, is responsible for actively pulling data from multiple counters and storing the data in a SQL data base. It features a reporting tool for generating and automatically emailing reports.

Traffic Count software consists of the a Control Panel application and web based Dashboard.



Web Based Dashboard

1. Reporting Tool

Generate reports and graphs in the following formats:

- Flat file format (comma separated value - CSV) for any time interval.
- Aggregated graphs printed to PDF:
 - Hourly
 - Weekly by Day
 - Monthly by Day
 - Monthly by Week
 - Yearly

2. Counter Information

View information about all the counters such as:

- Hardware and software versions
- IP address, port address and MAC address
- Error status

3. Opening and Closing Times

Configure the opening and closing times of each the store.

4. Report Emailing

Automatic emailing of CSV reports on a scheduled basis.

The screenshot shows the 'Traffic Count' dashboard with a navigation bar containing 'My Counters', 'Reports and Graphs', 'Report Delivery Schedule', and 'Counter Operating Times'. The main content area is divided into two columns. The left column has three sections: 'Counters' with a 'Select Group' dropdown set to 'All' and a 'Select Counter' dropdown set to 'Sandton'; 'CSV Report' with 'Select Start Date' and 'Select End Date' fields and a 'Generate CSV' button; and 'Counter Info' with a 'General Counter Info' section listing 'Device Model: iCount500-4R', 'Hardware Version: 1.00 MOD_A', 'Software Version: 1.04 TC', and 'Date Commissioned: 2013/12/17 08:10:44 PM'. Below this is a 'Counter Health Info' section with 'Scan Attempt: 2013/12/18 09:05:46 AM', 'Counter Status: Online', and 'Error Status: No Errors'. At the bottom is a 'Counter Data Retrieval Info' section with 'Data Retrieval attempt: 2013/12/18 09:08:30 AM' and 'Data Collection Status: Success'. A 'Network Settings' section at the bottom lists 'IP Address: 192.168.1.23', 'Port Number: 10001', and 'Mac Address: 0204AF2EB94'. A footer shows 'All Fourways'.

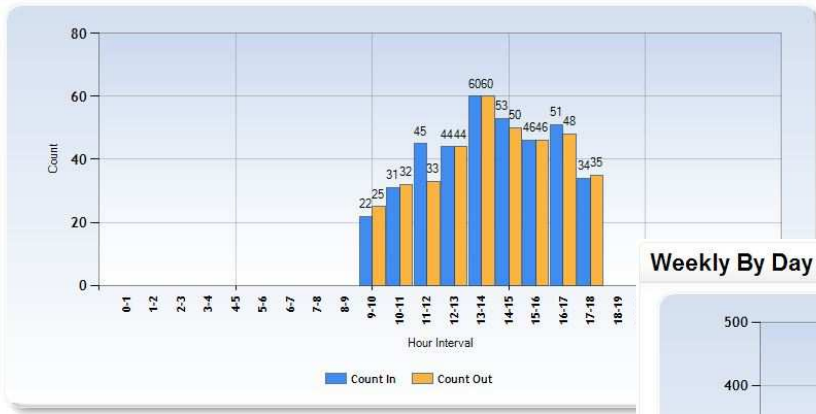
Generate graphs for viewing and export to PDF.

The screenshot shows the 'Traffic Count' dashboard with a navigation bar containing 'My Counters', 'Reports and Graphs', 'Report Delivery Schedule', and 'Counter Operating Times'. The main content area has two sections: 'Select Report Type' with a 'Daily' dropdown and 'Daily Report Input Parameters' with a 'Select Start Date' field set to '2013/11/23' and a 'Generate' button. Below this is a 'Daily People Count Report - Sandton (2013/11/23)' section featuring a bar chart. The chart shows 'Count In' (blue bars) and 'Count Out' (orange bars) over a 24-hour interval. The y-axis is labeled 'Count' and ranges from 0 to 80. The x-axis is labeled 'Hour Interval' and ranges from 0-1 to 23-24. The data points are: 0-1: 22, 1-2: 25, 2-3: 31, 3-4: 32, 4-5: 45, 5-6: 33, 6-7: 44, 7-8: 44, 8-9: 44, 9-10: 45, 10-11: 51, 11-12: 53, 12-13: 60, 13-14: 60, 14-15: 53, 15-16: 50, 16-17: 51, 17-18: 48, 18-19: 34, 19-20: 35, 20-21: 0, 21-22: 0, 22-23: 0, 23-24: 0. Below the chart is a 'Filtering' section with a checked checkbox for 'Show Count Out Values' and an 'Export to PDF' button. At the bottom, it says 'Export File: Daily People Count Report - Sandton (2013/11/23).pdf' and a 'Generate PDF' button.

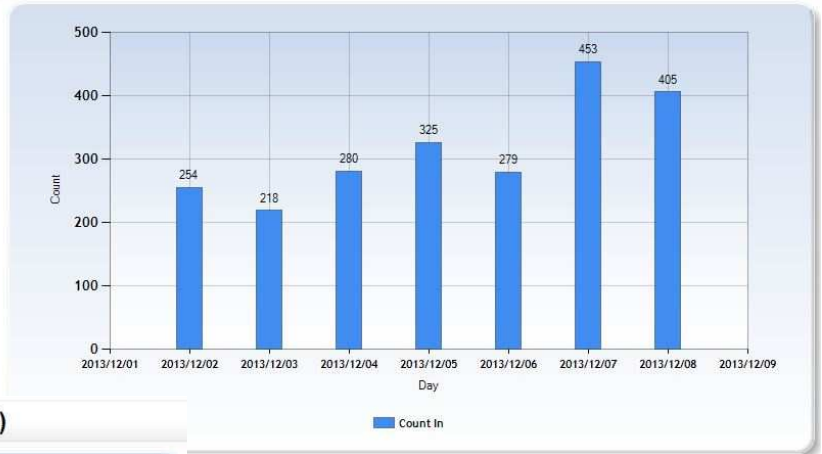
Filtering to view Count Out values.

Export graph to PDF.

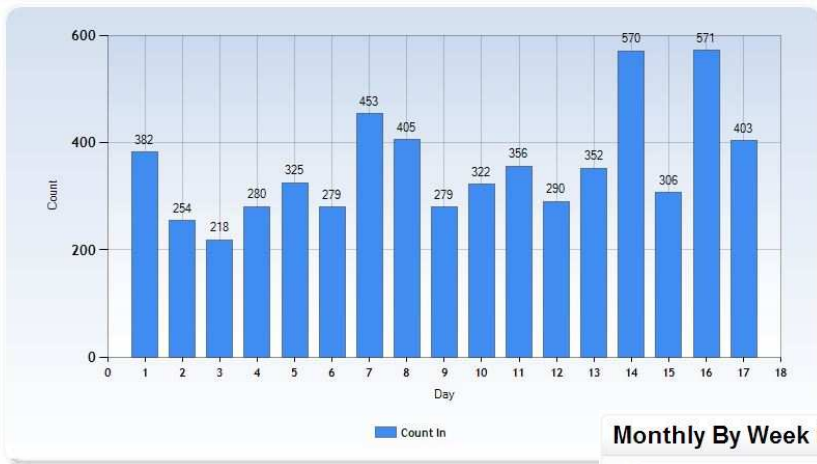
Daily People Count Report - Sandton (2013/11/23)



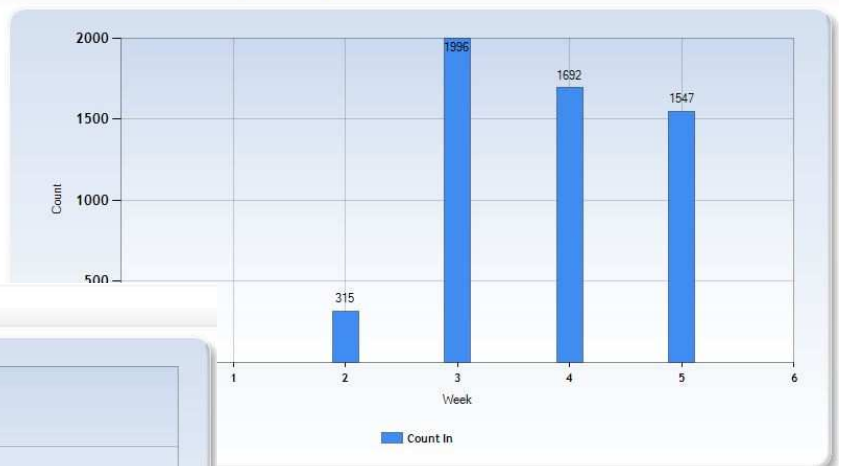
Weekly By Day People Count Report - Sandton (2013/12/02 - 2013/12/08)



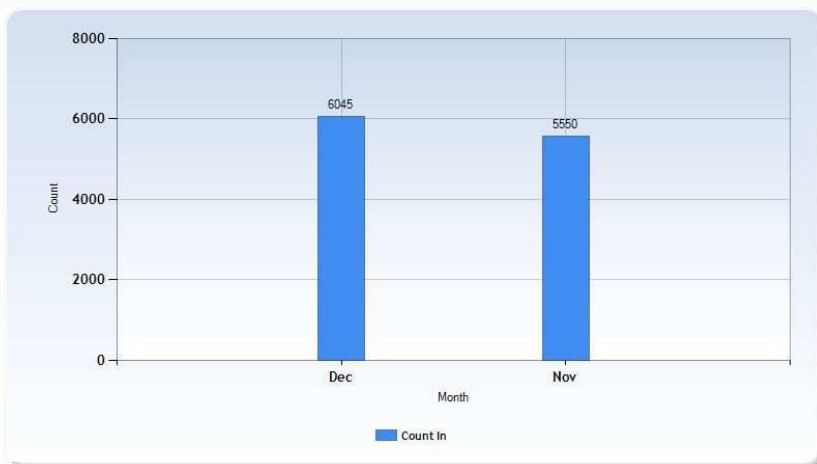
Monthly By Day People Count Report - Sandton (2013/12)



Monthly By Week People Report - Sandton (2013/11)



Yearly People Count Report - Sandton (2013)



Control Panel



Counter Commissioning
Commission, edit and delete
counters.



Data Retrieval Scheduling
Set up a 'collection window' and
'scan interval' which determines
when data should be retrieved
from the counters over the
network or internet.



Windows Services
Easily start and stop the various
Windows services.